



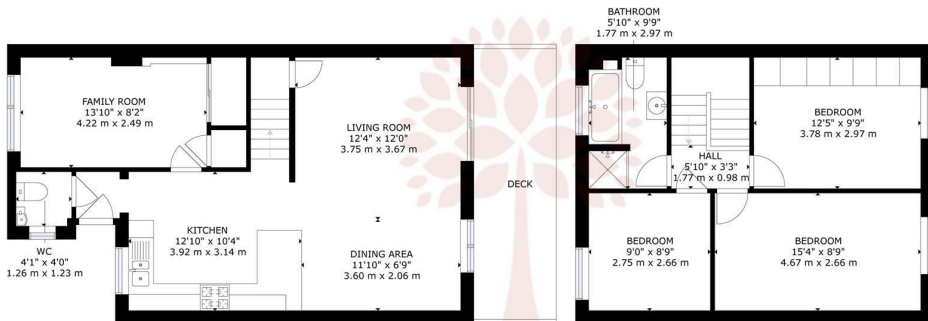
 4  1  2  C

19 Boveridge Gardens, Bournemouth, BH9 3RF  
Offers In Excess Of £350,000

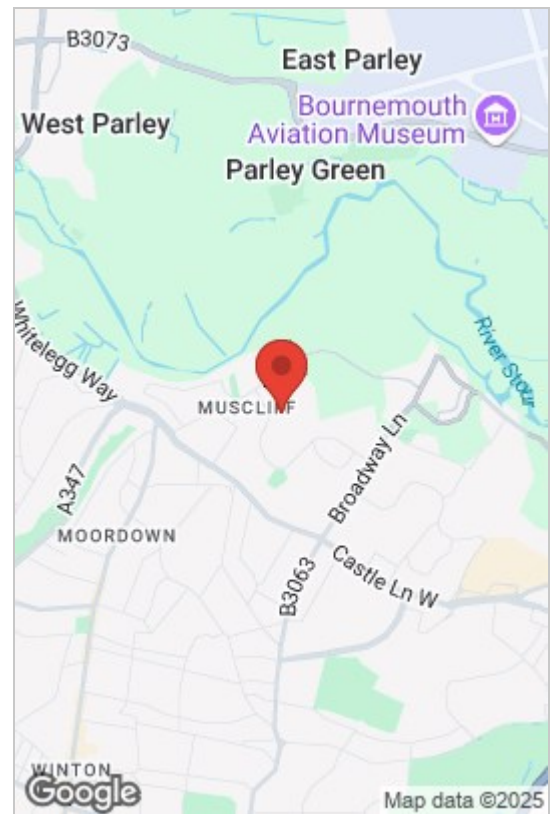
## BOVERIDGE GARDENS, BOURNEMOUTH

GROUND FLOOR

FIRST FLOOR

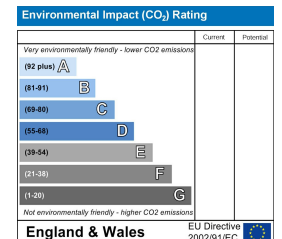
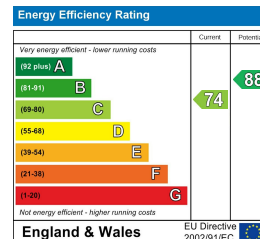


GROSS INTERNAL AREA  
FLOOR 1: 563 sq.ft, 52 m<sup>2</sup>, FLOOR 2: 464 sq.ft, 43 m<sup>2</sup>  
TOTAL: 1027 sq.ft, 95 m<sup>2</sup>  
SIZES AND DIMENSIONS ARE APPROXIMATE, ACTUAL MAY VARY.



- Located in Boveridge Gardens, a popular, private and family-friendly close in Muscliffe. Close to CastlePoint, local amenities, transport links and Muscliff Nature Reserve.
- Immaculate condition throughout with modern interiors and neutral décor.
- Versatile fourth bedroom/home office, on the ground floor with WC.
- Contemporary family bathroom with separate bath and shower.
- Within walking distance to Epiphany and Muscliff Primary Schools; and good secondary catchment area.
- Spacious open-plan kitchen/living/dining with garden accessed via sliding doors.
- Three first floor double bedrooms, all with luxury carpet and fitted wardrobe to Master.
- Viewing Is a Must, Vendor suited.

\*\*\*GUIDE PRICE £360,000 - £365,000\*\*\* IMMACULATE Four Bedroom Terraced Home in the heart of Muscliff, just moments from outstanding local schools and CastlePoint. Boasting a **STYLISH OPEN-PLAN KITCHEN/LIVING SPACE**, versatile fourth bedroom/home office, landscaped garden and parking for two cars- this is the perfect 'TurnKey' family home in a prime location. Viewing is a must to fully appreciate.



Whilst these details are thought to be correct, their accuracy cannot be guaranteed and do not form part of any contract. It should be noted that we have not tested any fixtures, fittings, equipment, apparatus or services, therefore we cannot verify that they are in working order or fit for purpose. Solicitors should be used to confirm that any moveable items described within these details are in fact part of the sale agreement. While we try to ensure measurements are correct they are not guaranteed and purchasers are advised to take their own measurements before ordering any fixtures or fittings.